



a division of ADS Corporation

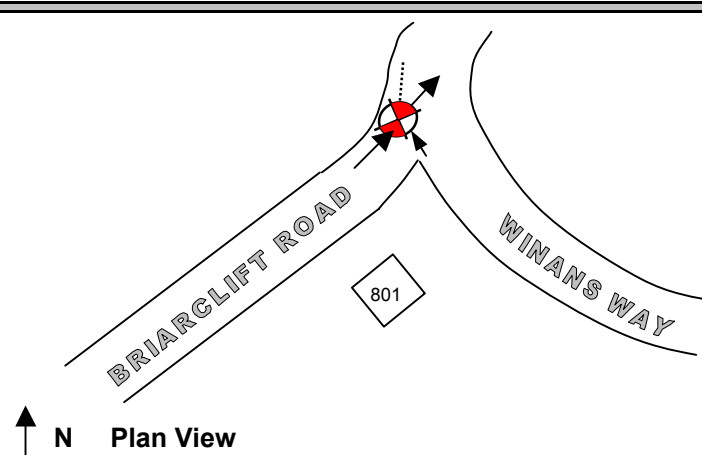
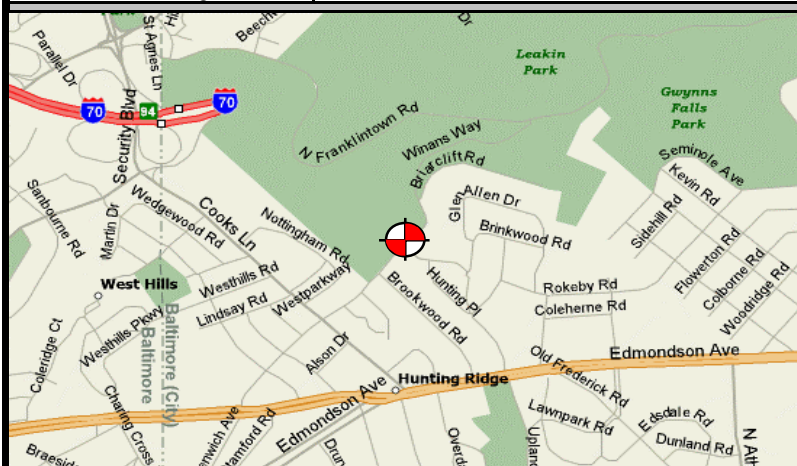
Baltimore SSO

Site Investigation Report

FM Initials: DF

Project: 14 Dead Run System Improvements

Site Name:	14_17PS	Monitor Series:	4000 WR	Monitor S/N:		Manhole #:		Investigation Information: Upstream Input: (L/S, P/S) DNI Upstream Manhole: Downstream Manhole: Depth of Flow: 3.5" + - 0.38 Description of Site Hydraulics:
Address / Location:	801 Briarclift Road	Map Page #:		Map Grid #:				
		Pipe Height:	9.5"	Pipe Width:	9.5"			
		IP Address:	CDPD					
Access:	Drive	GPS Coords:	N DD.dddd		W DD.dddd			
Date/Time of Investigation:	6/29/2005 11:30							



RIPPLE AT INFLUENT CHANNEL

Manhole Information:

Manhole Depth: 8.6'

Manhole Material / Condition:
COATED BRICK / GOOD

Active Drop Connections?
Yes

System Character:

☒ Residential
☐ Commercial
☐ Industrial

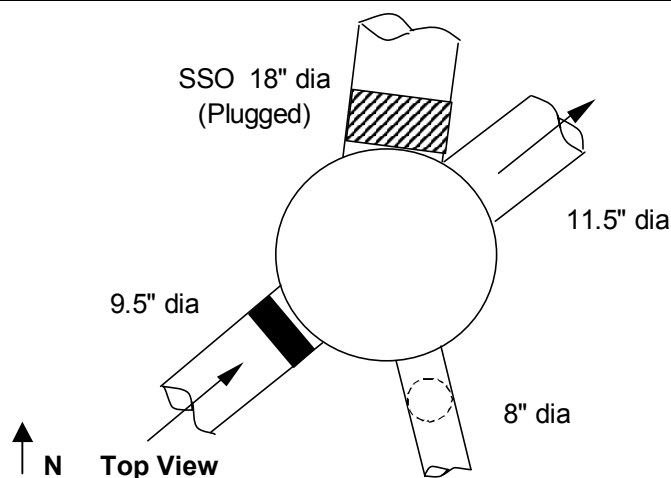
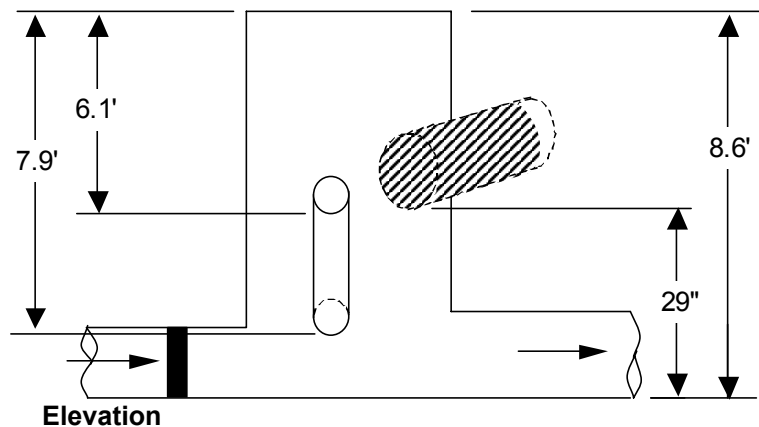
Notes:

Legend:

Cast Iron Flap Valve

Sensor Location

N.T.S.- Not to scale



The monitoring period ended as of November 30, 2006.